

# TECHNICAL SPECIFICATIONS

		ENVOY X1	ENVOY X2
FREQUENCY	Tx	1.6 to 30MHz	1.6 to 30MHz
RANGE	Rx	250kHz to 30MHz	250kHz to 30MHz
CHANNELS		100	1000
SCAN GROUPS		10	20
TEMPERATURE RANGE		-30°C to +60°C	-30°C to +60°C
HUMIDITY		95%	95%
OUTPUT POWER		125W PEP	125W PEP
VOLTAGE RANGE		10.8 to 13.8 V DC	10.8 to 13.8 V DC
CURRENT DRAW	Tx	12.5A	12.5A
	Rx	500mA	500mA
WAVEFORM		Analogue Voice	Analogue Voice
		Digital Voice (MELPe/TWELP)	Digital Voice (MELPe/TWELP)
		Selcall	Selcall
		FED-STD ALE	FED-STD ALE & MIL-STD-ALE
DIMENSIONS	RFU	210 x 270 x 65 mm (D x W x H)	210 x 270 x 65 mm (D x W x H)
	Handset	75 x 32 x 151 mm (D x W x H)	75 x 32 x 151 mm (D x W x H)
	Console	190 x 228 x 79 mm (D x W x H)	190 x 228 x 79 mm (D x W x H)
WEIGHT	RFU	2.8kg	2.8kg
	Handset	0.3kg	0.3kg
	Console	1.1kg	1.1kg
SUPPORTED ACCESSORIES		Morse key, GPS Receiver	Data Modem (internal / external), 2240 Smartlink, Crosspatch, Telephone Interconnect, External Encryptor, Voice Recorder, GPS Receiver, PC, Custom
SUPPORTED APPLICATIONS		TPS-3250, KMS/KFS, Codan Chat (ALE only), RTS, VCP, XTEND	TPS-3250, KMS/KFS, Codan Chat, RC50-C, Sprint Chat/Net, RTS, VCP, XTEND
LANGUAGES		English, Arabic, Dari, Pashto, Chinese, French, Portuguese, Russian, Spanish	English, Arabic, Dari, Pashto, Chinese, French, Portuguese, Russian, Spanish
PROTECTION		Over Voltage, Under Voltage, Over Temperature, Reverse Polarity	Over Voltage, Under Voltage, Over Temperature, Reverse Polarity

# CONFIGURATIONS

Versatile design for mobile, base and complex systems

Envoy is designed using a modular approach, with a handset for mobile applications and a desk console for bases. The use of IP over Ethernet enables geographical separation of radio and console, without the need for expensive adaptor devices. Envoy is available in rapidly deployable cases.



# OUR PROCESS

Solving challenging requirements is what we do best



## ASSESS

Our technical consultants will conduct a detailed on-the-ground assessment of:

- Human needs
- Operational environment
- Opportunities and challenges
- Cultural context
- Scenario planning



## DESIGN

Our field service team will then design a custom solution for those challenges, using the right hardware and software from Codan or one of our technology partners.



## DEPLOY

Our specialist logistics team gets the hardware and the resources to wherever you are, getting your system up and running fast.



## TRAIN

We'll train operators and communications staff on how to use the system – which will be a short process, thanks to our easy-to-use interfaces and interoperability.



## SUPPORT

We're available to be deployed within 24 hours for any support required. And we're always on hand for any advice you require.

HF TRANSCEIVER

# ENVOY

12-30040-EN Issue 8

## CONTACT US

**codancomms.com/envoy**  
sales@codancomms.com

**Australia:** +61 8 8305 0528  
**Canada:** +1 250 382 8268

**US:** +1 571 919 6432  
**UAE:** +971 44 53 72 01



**CODAN**  
COMMUNICATIONS

**BE HEARD**

**CODANCOMMS.COM**



# CHALLENGING REQUIREMENTS? NO PROBLEM

The Codan Envoy smart radio series are the most intuitive, reliable and advanced radios we have ever built. Envoy’s clear and dependable High Frequency (HF) digital voice and data communications means you have the confidence to communicate anywhere and anytime without the need for existing infrastructure.



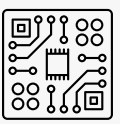
### EXCEPTIONAL DIGITAL AND ANALOGUE VOICE CLARITY

Codan’s Digital Voice technology provides significantly reduced hiss, crackle, pops, and multipath effects typical of HF, making voice quality similar to modern cellular phones with continued operation in degraded and fading channels.



### UNPARALLELLED PERFORMANCE

Envoy provides superior specifications that minimise chances of interference from adjacent stations and supports connection of dual antennas for short and long-range propagation.



### SOFTWARE-DEFINED ARCHITECTURE

Envoy uses the latest-generation high-performance Digital Signal Processor (DSP), Field-Programmable Gate Array (FPGA) and system on chip (SoC) technology.

Built upon a proven SDR platform with thousands of hours of operation in the field, Envoy delivers market-leading performance and future upgradability through software updates that support evolving standards and ensure sustainability.



### GPS SUPPORT

Supporting connection to GPS via NMEA0183 compatible GPS receivers, the Envoy is capable of sending GPS position and calculating distance and bearing. When combined with Codan mapping software, this feature also enables position tracking of deployed vehicles and route planning with pre-programmed waypoints.



### INTUITIVE OPERATION

Envoy’s large high-resolution, sunlight-readable colour display, and intuitive menu system makes operation similar to modern smartphones. Making calls is as simple as navigating to your contact list, locating the desired contact and pressing the “call” button.



### ENCRYPTED COMMUNICATION

Envoy has a choice of encryption options to suit the required level of communications security. Ranging from basic voice security to “top secret” classification, all voice encryption options for Envoy activate by a single hotkey and can be automatically enabled on pre-defined channels or networks.

# YOUR CODAN ENVOY SOLUTION

## GATEWAYS

### 3033 TI

Codan’s Telephone Interconnect equipment can link into the telephone system enabling you to make or receive telephone calls on your HF transceiver.

### 2240 SMARTLINK

SmartLink provides the ability to support multiple personnel and locations from a single Envoy RF unit and provides an in-built 802.11 wireless access point and two wired Ethernet ports for connectivity.

### 3031 XPATCH

Codan’s 3031 Crosspatch enables you to carry ‘HF on your belt’ using a VHF/ UHF radio and a Codan Envoy Transceiver to extend a HF and VHF/ UHF network.

## DATA

### EMAIL/FILE

Codan offers various solutions for email and file transfer for both HF and web based communications.

### CHAT

Codan’s chat software enables users within a HF, or external network to communicate via chat.

### SMS

Send and receive SMS messages on your HF radio to/from any cellular phone.

## REMOTE

### XTEND

The Codan XTEND app allows you to operate your Envoy HF radio via your smartphone or tablet. Using the widespread familiarity of smartphone devices, XTEND provides an exceptionally easy-to-use alternative to a dedicated radio control point.

### VIRTUAL CONTROL POINT

Control the Envoy radio through a PC via the Virtual Control Point, a digital replica of an Envoy 2220 handset that emulates similar functionality.

### INTERNET PROTOCOL

Control and communicate through your Envoy transceiver using remote solutions through the internet, even if the transceiver is on the other side of the world.

## ASSET MANAGEMENT AND TRACKING

### RTS

Codan’s Remote Tracking Software provides an effective means to locate, track and manage remote assets with no on-going subscription fees.

### CONVOY

Codan Convoy complete communication solution is the only communications platform that integrates HF radio, satellite and cellular communications services into the one system.

## POWER SOLUTIONS

### 3020 POWER SUPPLY

Used to power your transceiver system from universal AC mains, with comprehensive protection against unstable power sources.

### BATTERY BACKUP

12V deep cycle battery capable of supplying the Envoy transceiver and antenna.

### SOLAR

Solar charging solutions are available to maintain a supply battery for the Envoy HF radio and antennas.

## HIGH POWER AMPLIFIERS

### 3061 500W

A reliable and affordable 500W high power solution for voice and data communication.

### 3062 1KW

A reliable and affordable 1KW high power solution for voice and data communication.

### 3240 1KW

An automatic antenna tuner developed to interface directly with Codan’s 3061 and 3062 HF power amplifiers.

## ANTENNAS

### BROADBAND

Full size base station antennas designed to suit a wide range of HF communications requirements and installation scenarios.

### TUNED

A range of tuned antenna solutions that are suitable for installations with limited space.

### MOBILE

Antennas designed for a wide range of vehicle types and applications.

## WARRANTY AND WORLDWIDE SUPPORT

Codan products are backed by an extensive distribution and support network, and include a three year extendable warranty.

